

Nanica Dolls

COURSE



Bonbon Doll

Nanica Dolls

COURSE

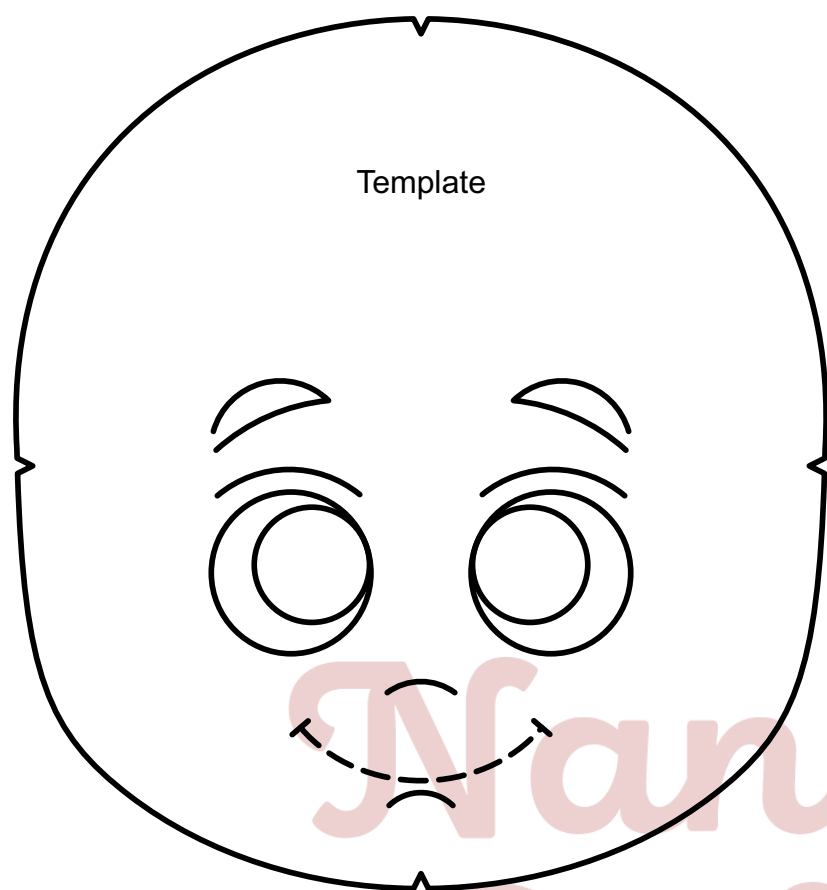
Materials List:

- Doll Skin Cotton Fabric
- Printed Tricoline Fabric: For the dress
- Plain Tricoline Fabric: For legs and pants
- Black Sherpa Fabric
- Grosgrain Ribbon: For the dress waist bow
- Satin Ribbon
- 2 Buttons
- Waxed Cord
- Brushes and Small Lace Trim
- Fabric Paints: Dark Pink, Antique Pink, Rustic, Black, White, Doll Face, Burnt Guava
- Siliconized Filling
- Standard Sewing Threads and Topstitch Threads
- Blush
- Sewing Machine
- Doll Filling Tool and Pins
- Scissors and Iron
- Black Ghost Pen
- Ball Styluses and Needles
- Hot Glue Stick and Glue Gun
- Hair Dryer
- Synthetic Round Brush 303 - 20/10 Keramik
- Keramik Liner Brush 0 745
- Flat Brush 121S Keramik 0
- Flat Brush 121S Keramik 4
- Flat Brush 121S Keramik 6
- Condor Cat's Tongue Brush 286-8
- Condor Artistic Brush - Series 421-6 Flat

Note: Sew along the traced lines.

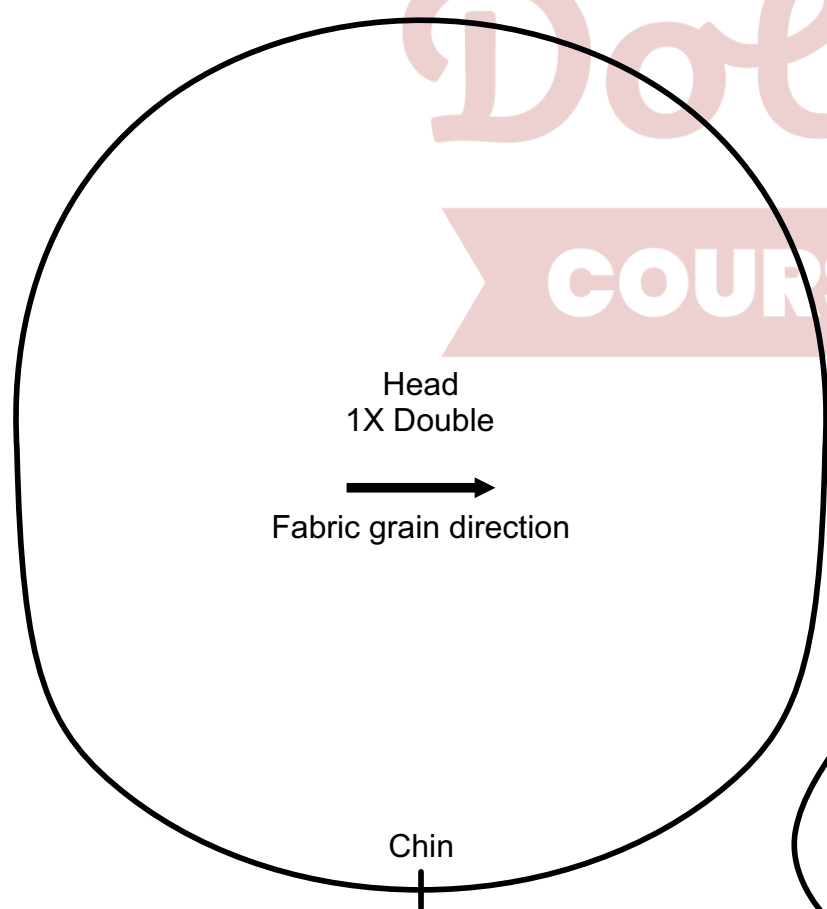
Bonbon Doll

Approximately 45cm



Mirror (Fold)

Hair Bun
2X

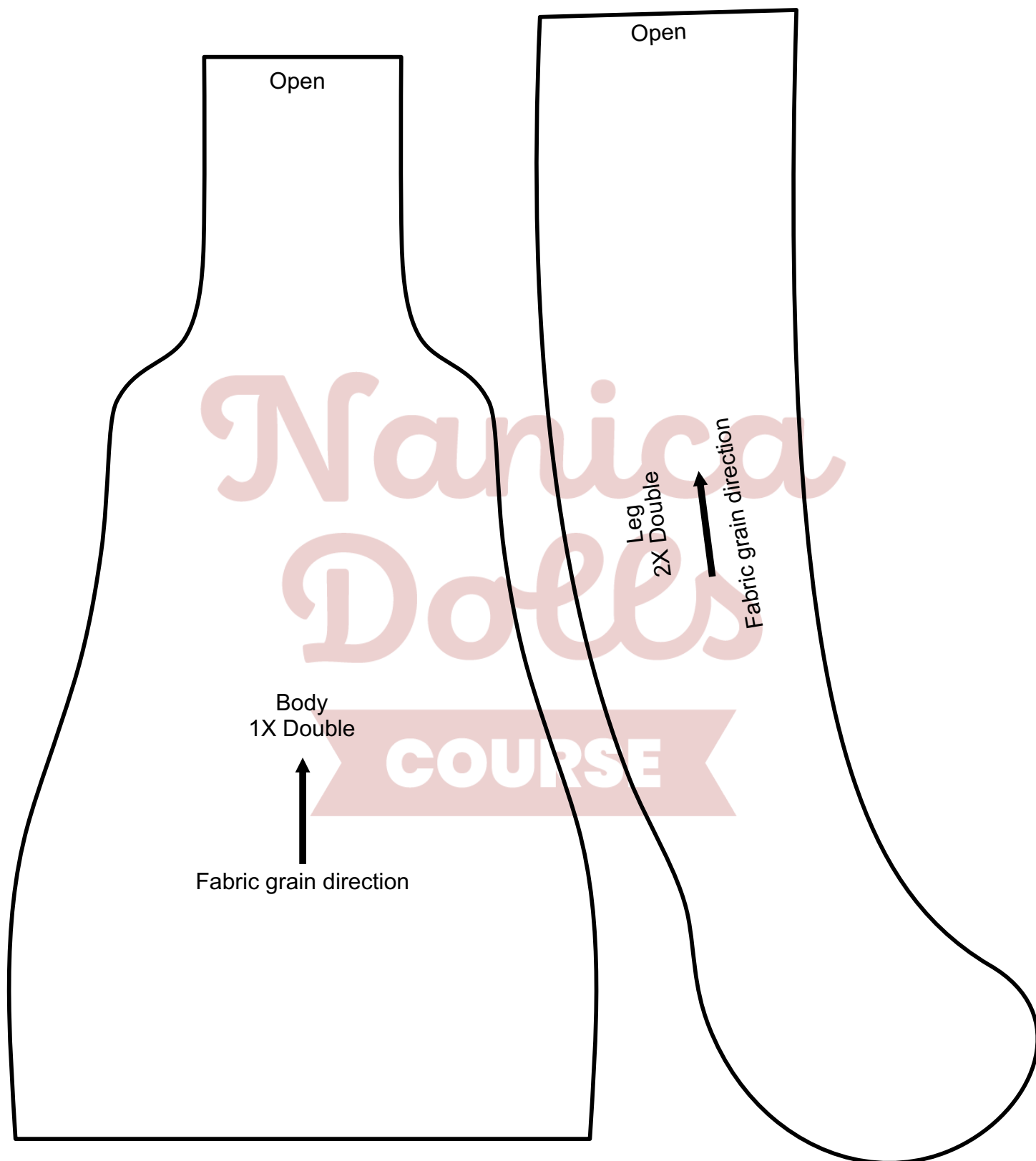


Arm
2X Double

Open

Bonbon Doll

Approximately 45cm



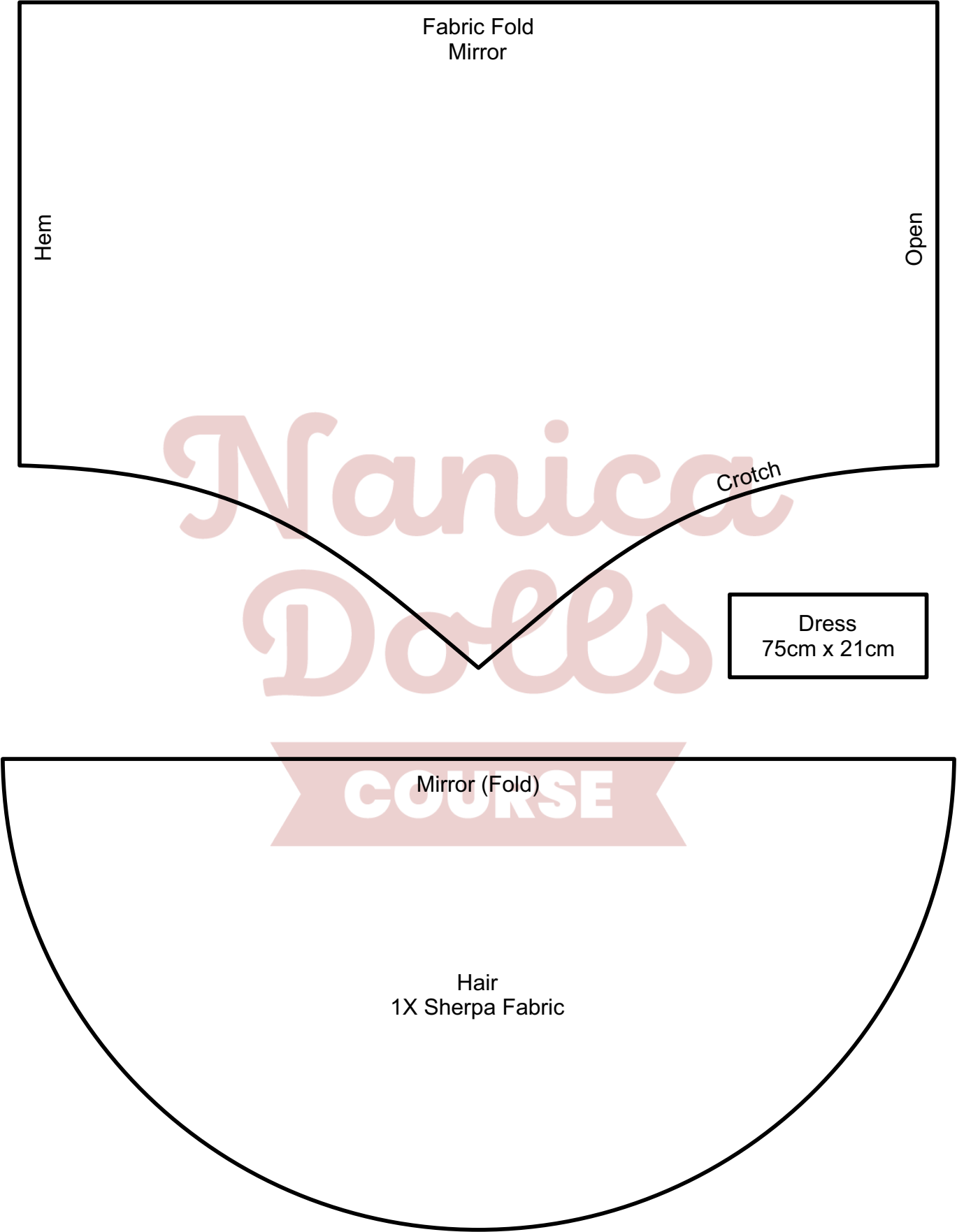
This material is protected under copyright law (Law 9.610/98). Its sale or distribution without authorization is prohibited.

This material is for the personal use of the purchaser only and may not be shared with others, even for free.

Violations of these rules are subject to penalties of up to 3,000 times the value of the original copy.

Pieces made from this material can be sold commercially.

Bonbon Doll
Approximately 45cm



This material is protected under copyright law (Law 9.610/98). Its sale or distribution without authorization is prohibited.
This material is for the personal use of the purchaser only and may not be shared with others, even for free.
Violations of these rules are subject to penalties of up to 3,000 times the value of the original copy.
Pieces made from this material can be sold commercially.